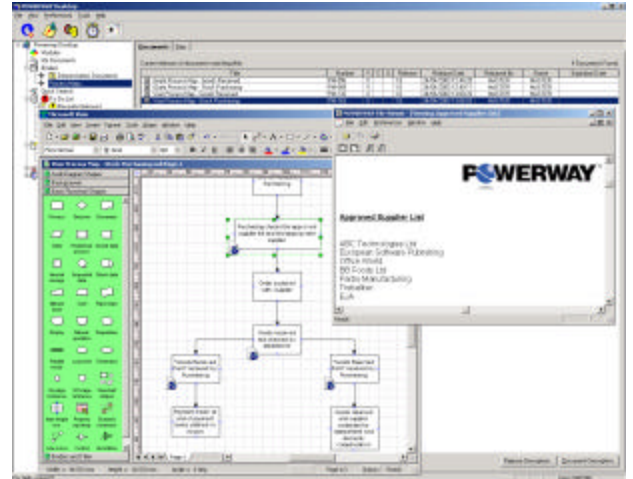


Powerway Process Mapper allows you to create detailed, interactive maps of your key business processes, with direct linkage to Powerway document control solutions for total quality systems management.



- Create process maps with either Microsoft Visio or Corel iGrafx and fully integrate them into your document management system.
- Link your entire organization's process maps as part of the overall document control strategy.
- Automatically launch process maps as well as other documents from links within flowchart objects.
- Navigate dynamically through your organization's processes from your PC, drilling down to forms that can be opened, edited and submitted.
- Retrieve all process maps registered into Desktop using the Binders or Quick Search facility.
- Facilitate conformance to process-centric quality standards such as ISO 9001:2000 and TS 16949.

Dynamic Process Mapping

Powerway Process Mapper allows you to create and control flow diagrams for the key processes in your organization. Using Microsoft Visio or Corel iGrafx, you create process maps and register them into Powerway document control. Users can view a process map from Desktop using the Binders or Quick Search facility and then drill down into other process maps or documents directly from the original process flow.

Conformance to Process-Based Quality Standards

With International Quality Standards such as ISO 9001:2000 and TS 16949 taking a more process-centric approach, organizations are now looking to include process maps as part of their quality management system. By integrating your flowcharting tools, such as iGrafx or Visio, into Powerway document control, you can be sure that the correct procedures will be followed across all your processes.

Powerway Suite 2000

Powerway's information technology drives innovation and quality throughout the product development process from concept and design through engineering, sourcing and manufacturing. Powerway's enterprise and supply chain solutions reduce risks and costs and accelerate product delivery by enabling connectivity, visibility and real-time information sharing.

Powerway software works together to provide complete paperless document and data control, advanced quality planning, integrated quality management and real-time factory floor data collection for optimum business process standardization and document management.

Suite 2000 helps your organization overcome the problems caused by a lack of communication and collaboration such as late engineering changes, product quality issues, scrap and rework, delayed product delivery and lost sales.



The Project Technologies Group, a Powerway Partner

(248) ISO-1234 *info@projecttech.com* <http://projecttech.com>