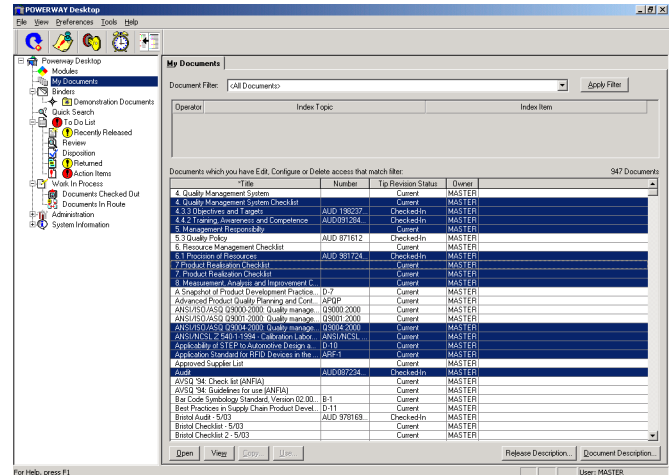


Powerway List Builder gives users of Desktop the ability to create customized lists of documents externally and then perform group actions on those lists, saving time and effort.



- Provides the ability to select multiple documents in Desktop Binders, Recently Released, My Documents and QuickSearch.
- Automatically resolves duplicates and allows combining of search results.
- Allows mass printing of documents from the Desktop.
- Ensures that the security levels applied to documents in Powerway Desktop are maintained.
- Displays Document Title, Number, Revision, Status, Release Date and Released By information.
- Allows the document list and information about each to be exported to a CSV file for input into another table-oriented application.
- Provides batch copying of documents to a specified location with automatic renaming of the file to include title, revision and status.
- Enables an external application to perform additional tasks such as watermarking or retrieving additional document/revision information prior to sending documents to the printer.

Powerway List Builder provides greater flexibility in the way that users work with business critical documentation. Users can create customized lists of documents externally from Desktop and perform group actions on those lists, including mass document printing or saving.

Maintained Security

The document security settings within Powerway Desktop are maintained within List Builder. This means that only current documents to which a user has access can be added to a list. Displaying the Document Title, Number, Revision, Status, Release Date and Released By information means that the user has the most important details available through List Builder.

Improved Document Control

Powerway List Builder also contains options to expand the built-in functionality of List Builder. Using the 'Pre-Print' function enables an external application to perform additional tasks such as setting up watermarking or retrieving additional document/revision information prior to printing. Also included is 'External Tools extensibility' which allows multiple external applications to be made available from List Builder, in addition to the standard functionality.

Powerway Suite 2000

Powerway's information technology drives innovation and quality throughout the product development process from concept and design through engineering, sourcing and manufacturing. Powerway's enterprise and supply chain solutions reduce risks and costs and accelerate product delivery by enabling connectivity, visibility and real-time information sharing.

Powerway software works together to provide complete paperless document and data control, advanced quality planning, integrated quality management and real-time factory floor data collection for optimum business process standardization and document management.

Suite 2000 helps your organization overcome the problems caused by a lack of communication and collaboration such as late engineering changes, product quality issues, scrap and rework, delayed product delivery and lost sales.



The Project Technologies Group, a Powerway Partner

(248) ISO-1234 info@projecttech.com <http://projecttech.com>