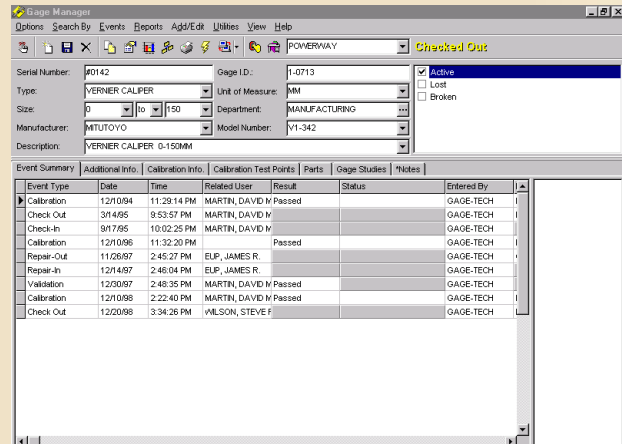


Powerway® Quality Solutions Gage Manager

Powerway Gage Manager automates crucial activities associated with the tracking, calibration, and study of measurement instrumentation in a manufacturing and/or laboratory enterprise.



- **Calibration Functions:** Records calibration data and continuously updates the status of a calibration with five possible results: Passed, Failed, Adjusted, Limited Use and Report of Value.
- **Study Functions:** Performs full R&R Studies based upon the AIAG standard. Linearity, bias, and stability tests are also supported. Schedule studies for individual gages or schedule them based on a gage's type or manufacturer/model number.
- **Tracking Functions:** Track every gage you have for calibration: Check-out/Check-in, Check-out/Check-in from Repair, Check-out/Check-in from Calibration, R&R, Bias, Stability, or user-defined events custom-built for your business.
- **Advanced Gage Functions:** Offers the multi-gage wizard which enables you to efficiently administer groups of gages. It even allows for bar code sticker printing!

Gage Manager accesses the Powerway core document control technology through the Powerway Desktop. This comprehensive Desktop integration enables Gage Manager to recognize and coordinate activities between companion applications such as Powerway Quality Planner (APQP) and Powerway Instruction Writer.

The Powerway Gage Manager software package enables Quality, Engineering, Instrumentation, and/or Calibration professionals to achieve effective records maintenance.

Data Conversion Service

Powerway can seamlessly integrate your existing gage data into Powerway Gage Manager, ensuring you keep all of your business critical gage data. Perhaps you already have an established gage management system in place, even if it is a simple Excel spreadsheet with historical gage data. The Powerway Gage Manager Database Conversion Service provides you with an easy transition from your existing gage management system to Gage Manager. The Powerway Gage Manager Database Conversion Service will save you time and money, ensure no important data is lost and ensure information is entered into the correct fields within Gage Manager.

Modules and Features

As a whole, the Gage Manager modules and features deliver a full-service gage management solution that tracks, calibrates, certifies, and creates studies for a configurable collection of gages. But not every user in the gage management process needs every feature of Gage Manager. Therefore, Gage Manager is designed so that the *right tools* can be deployed to the *right people*.

Gage Manager Certificate Builder

Certificate Builder creates unique, completely flexible calibration certificates. View or print a snapshot of any certificate including company logos, gage data, calibration results, boilerplate information or whatever you want on your custom certificates. For users with paper calibration certificates, the use of a standard scanning device enables you to create electronic versions of your paper documents that can function as Calibration Certificates.

Gage Manager Advanced Security

Advanced Security provides a high level of security for Powerway users in the Gage Manager product. This module creates custom profiles for individual users that control each user's access to individual gages and gage functions.

Powerway Suite 2000

Powerway Gage Manager is one of the modules that make up Powerway Suite 2000. From design through production, Powerway Suite 2000 automates paper-intensive engineering, quality and manufacturing processes, helping you reduce costs, improve quality and speed time to market. Powerway software is designed to work together to provide complete paperless document and data control, advanced quality planning, integrated quality management, and real-time factory floor data collection for optimum business process performance. Using Suite 2000, you can bring the entire organization together to overcome the problems caused by a lack of communication and collaboration such as late engineering changes, customer complaints, product quality issues, scrap and rework, and lost sales.



The Project Technologies Group, a Powerway Partner

(248) ISO-1234 info@projecttech.com <http://projecttech.com>