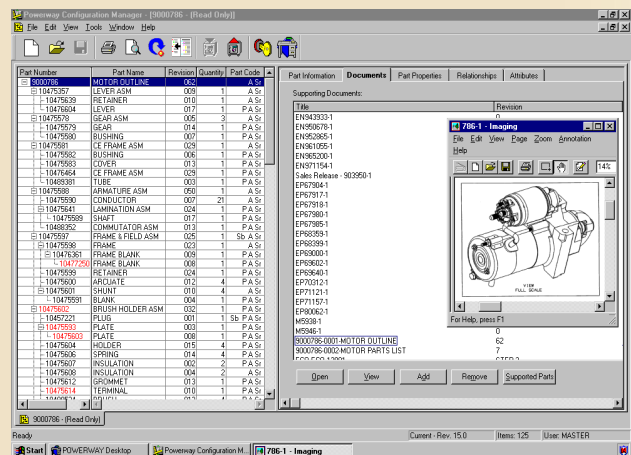


# Powerway® Engineering Advantage Configuration Manager

Powerway Configuration Manager allows for the graphic creation of Bill-of-Material (BOM) data into “objects,” each representing the various parts or assemblies that make up a product.

- Manages part/product/specification relationships throughout product life cycles.
- Provides easy retrieval of part/product information, documents and records.
- Enables timely communication of part/product changes.
- Allows viewing product information and documents including CAD files from multiple systems.



Powerway Configuration Manager allows for the graphic creation of Bill-of-Material (BOM) data into “objects,” each representing the various parts or assemblies that make up a product. This unique concept of BOM objects allows for a graphical part relationship model of the product life cycle, and allows you to navigate through documents or part records based on product properties or with a “part-centric” approach. You get product knowledge and access to support documents and drawings.

## Flexible Usability

Your engineering team can use Configuration Manager as a part/product structure management tool that can be used with multiple design systems and saves them time looking for critical information and part usages. Your sales and quality/manufacturing teams can use it to view and manage product information. Everyone benefits from timely communication of changes.

## Accessible Information

Configuration Manager can make a big difference in your business processes, allowing you to answer questions such as, “What products are affected if we use a different fastener?” or “Where else is the part used?”

# Powerway® Engineering Advantage Configuration Manager

## Powerway Suite 2000

Powerway Configuration Manager is one of the modules that make up Powerway Suite 2000. From design through production, Powerway Suite 2000 automates paper-intensive engineering, quality and manufacturing processes, helping you reduce costs, improve quality and speed time to market. Powerway software is designed to work together to provide complete paperless document and data control, advanced quality planning, integrated quality management, and real-time factory floor data collection for optimum business process performance. Using Suite 2000, you can bring the entire organization together to overcome the problems caused by a lack of communication and collaboration such as late

engineering changes, customer complaints, product quality issues, scrap and rework, and lost sales.

Powerway supports its industry-leading software solutions with a full range of professional services including consulting, deployment, integration and training.



*The Project Technologies Group, a Powerway Partner*

**(248)568-1599**   ***info@projecttech.com***   ***http://projecttech.com***