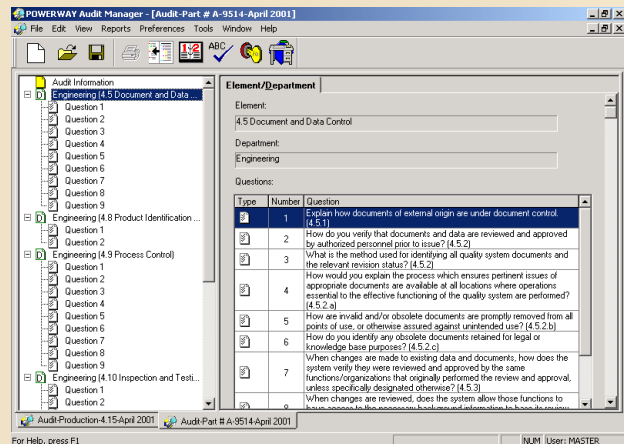


Powerway® Quality Solutions Audit Manager

Powerway Audit Manager manages the internal audit process from planning and scheduling through reporting.



- Complete Checklist Question revision history for ongoing development and configuring of the internal audit process provides your organization the flexibility necessary to customize internal audits with an easy to follow audit trail.
- Notification of past nonconformances when planning for future audits.
- Pre-structured checklist question forms for recording findings.
- Collection and Control of your audit data for measuring and reporting the effectiveness of your company's system.
- Secure document control of all audit questions and all findings data.
- Integrated document viewer, with the optional CAD System viewer, allows you to see most of your electronic documents, even if they weren't generated by Powerway Audit Manager.
- Seamless integration with Powerway Desktop, giving you a complete document creation/management system.

Powerway Audit Manager simplifies the audit creation process by allowing auditors to create and configure checklist questions specific to scheduled audits, by element, department, product, or process. Audit packages, consisting of checklist questions, related procedures, and audit information, are simply created and output for complete audit information.

Fully integrated with Powerway Corrective Action, Powerway's Audit Manager delivers a complete system to help you manage the internal audit process.

Scheduling

Using Powerway Audit Manager, you can plan and schedule internal audits by department, element, and/or product/process. Pre-defined audit intervals allow for planning of audits in conjunction with upcoming surveillance audits, auditor availability, and system required element coverage.

Simplified Checklist Creation

By selecting from pre-formatted or company generated checklist questions, the auditor can edit questions specific to an audit. Auditors filter checklist questions by department, element and/or product/process to create a unique list of questions for each audit, or save groups of questions for future use.

Powerway® Quality Solutions Audit Manager

Traceability

All Nonconformances found in an internal audit can AUTOMATICALLY generate CARs with Powerway Corrective Action. Following the internal Corrective Action Problem Solving Process, you can trace progress on CARs to completion on an audit by audit basis. This fully integrated system provides the evidence necessary to satisfy the requirements of your business standards. Each NC is traced to the audit, the department, the element, and/or the product/process.

Reporting Made Easy!

Completing the Internal Audit and Corrective and Preventive Action process is automated with the Powerway Reporting capability. Complete Management Review summary reports are available with a few clicks of the mouse. Detailed reports are also available to better analyze your company's compliance and effectiveness status with your system standards. Reports covering each auditor, department, element and/or product/process are also available!

Powerway Suite 2000

Powerway Audit Manager is one of the modules that make up Powerway Suite 2000. From design through production, Powerway Suite 2000 automates paper-intensive engineering, quality and manufacturing processes, helping you reduce costs, improve quality and speed time to market. Powerway software is designed to work together to provide complete paperless document and data control, advanced quality planning, integrated quality management, and real-time factory floor data collection for optimum business process performance. Using Suite 2000, you can bring the entire organization together to overcome the problems caused by a lack of communication and collaboration such as late engineering changes, customer complaints, product quality issues, scrap and rework, and lost sales.



The Project Technologies Group, a Powerway Partner

(248)568-1599 info@projecttech.com <http://projecttech.com>